



**COMMUNITY
ACTIONCOLLAB**

Resilience at Scale Through Collective Action

Imagine a future where

vulnerable households are
resilient in the face of daily crises
and humanitarian emergencies

Whether these are
crises of health,
livelihood, climate
or all of them
together



Instead,

today, they face
multiple and
multidimensional
difficulties that

continue
to hold
them back



Meet **Manju**

A smallholder farmer in rural India

She relies on her crops to feed her family.

This year, unseasonal rains destroyed her harvest. With no savings to fall back on, she is forced to take out a high-interest loan, plunging her deeper into poverty. Stress has affected her health, her children have dropped out of school.

Manju's story is not unique - millions of farmers face similar difficulties



Overlapping crises are not just **disruptions**
They are **existential threats**



Record-breaking heatwaves in 2023

181

billion

potential labour hours
lost due to heat
exposure

USD 141

billion

potential income loss
from labour capacity
reduction due to heat

Vulnerable communities

are disproportionately affected by crises, affecting their lives and livelihoods because...



Interventions for their wellbeing are usually **short term and transactional** in nature. They fail to address the **interconnected root causes**

Interventions **address symptoms, rather than systems** that are needed for long-term change

Without systemic change, **each crisis deepens dependency**, leaving communities unprepared for the next

Change **needs to be accelerated and scaled**

Introducing

 **COMMUNITY
ACTION COLLAB**

Orchestrating **collective action** of coalitions, community organisations and partners in development to build **resilience** of **vulnerable communities**





Collaboration our DNA

8+ Coalitions across health, livelihoods, climate

400+ Civil Society member organisations

We are present pan India



through partners; working with a large number of marginalised and excluded communities .



We work at the intersection of

health, livelihoods & climate



We build **Resilience**

The ability of vulnerable households to...

absorb (withstand shocks, resist failure)

bounce back (recover swiftly)

adapt (evolve forward, enhance performance)

to any disruptions without compromising
their long term wellbeing



Resilience

Operates at multiple, connected levels



Household



Community



Ecosystem



It requires

Systemic capability:

Interconnected governance, market, and financial systems that structurally enable shock management and sustained services

Structural Shifts:

Long-term transformative changes in social/gender norms to advance equity and empowerment for marginalized groups

Sustained Services:

Crisis mitigation, response, and growth opportunities with safety nets across health, livelihoods, and climate domains

Individual and Collective

Capability: Ability to identify resilience factors and take informed actions through individual/group decision-making

We also build a “Spring to Action”
disaster response &
recovery ecosystem

to ensure that strides made by households in their resilience journey do not get wiped out in the face of extreme climate events and humanitarian crises





We leverage **multidisciplinary teams, design thinking, and systems thinking** to craft

innovative solutions

to complex challenges

Our approach incorporates an **impact canvas** model, which employs proven methodologies to identify, define, and frame problems, analyze systems, and design solutions. These solutions are then piloted and refined to ensure they are scalable and ready for implementation.

Our Results

10 mn

vulnerable communities are resilient to shocks to their lives and livelihoods

100

community and local civil society institutions are resilient and amplify the voice of vulnerable communities

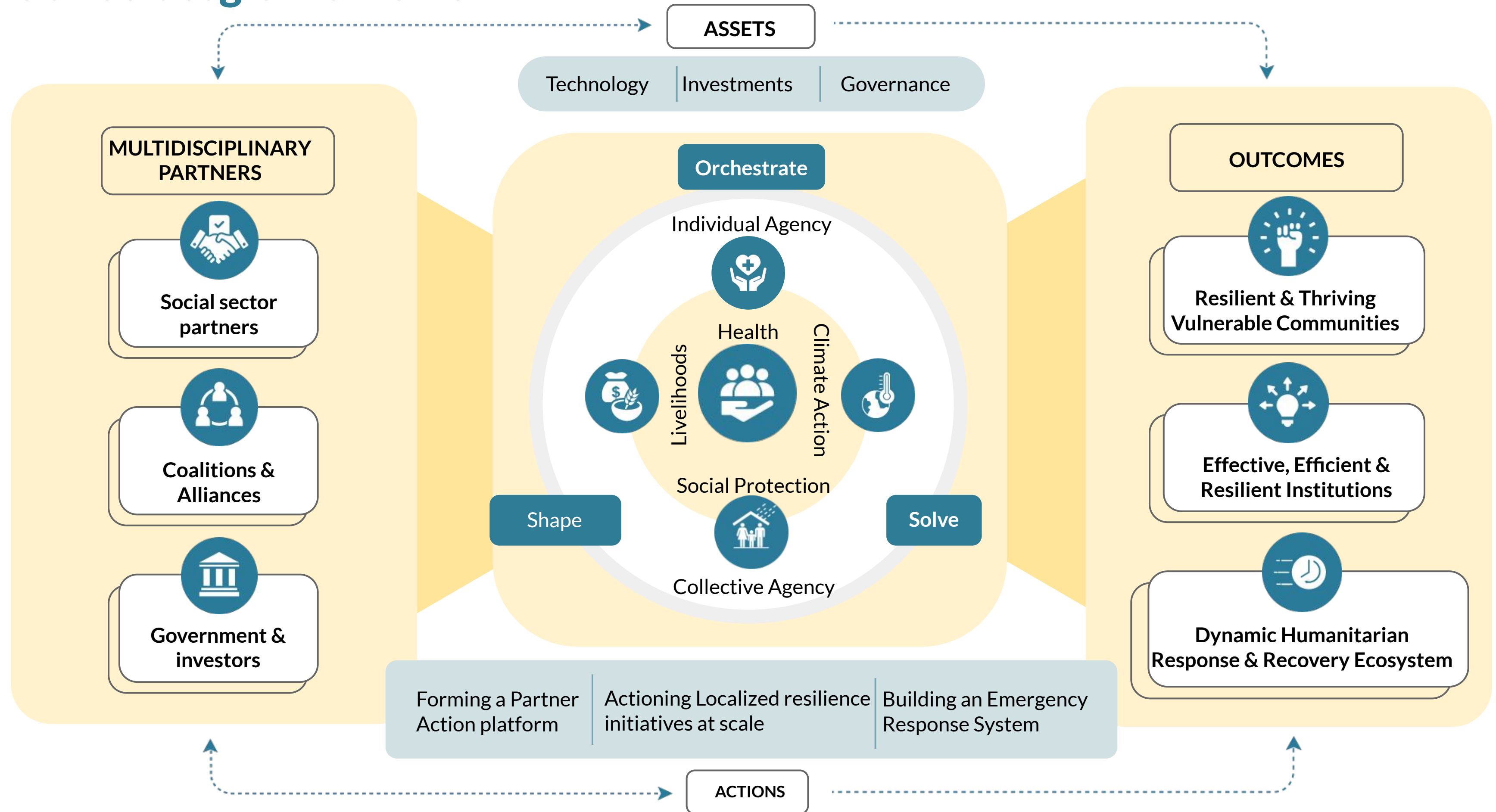
A dynamic

response & recovery

ecosystem for humanitarian crises

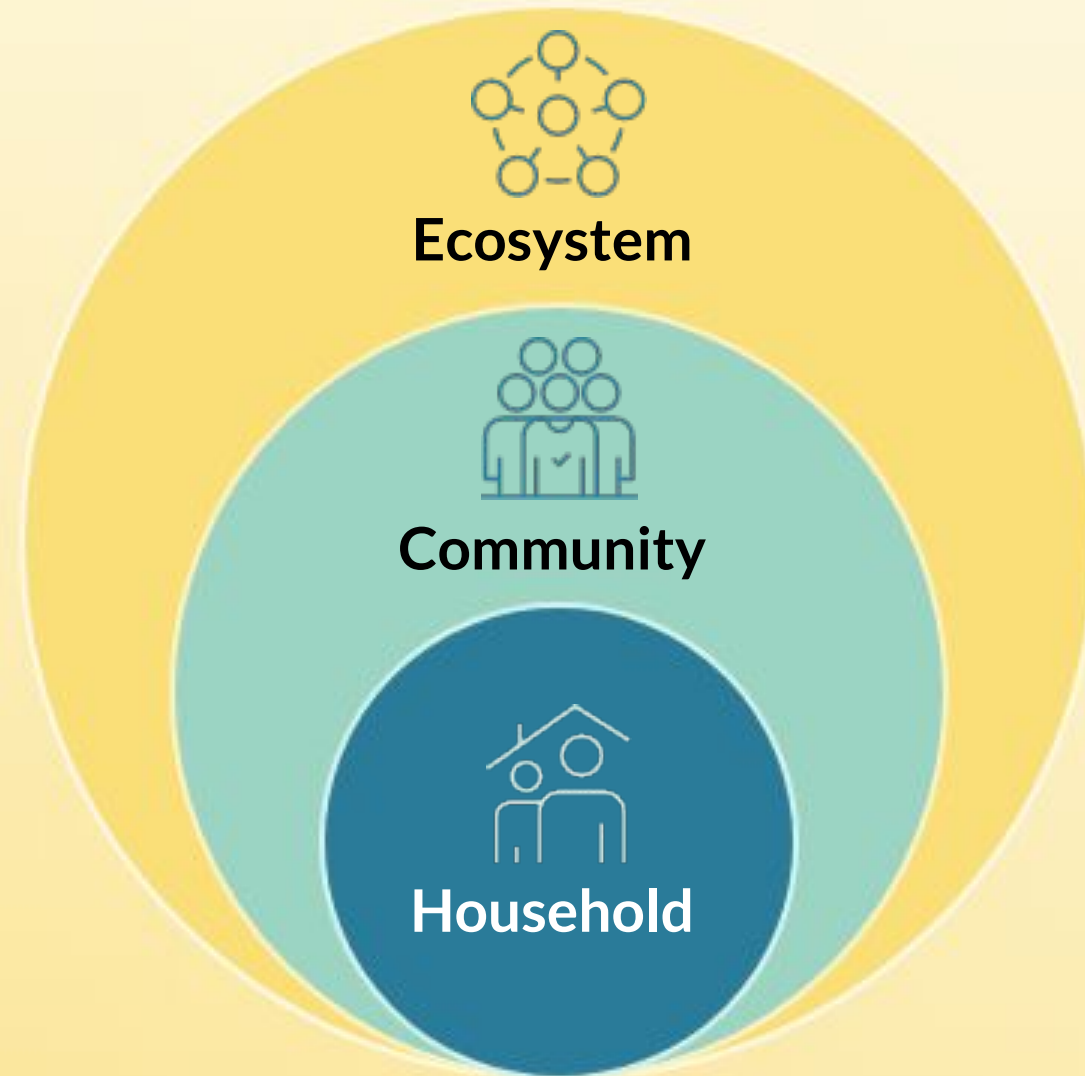


Our Strategic Framework



Our Resilience Framework

Levels of Resilience



Areas of Actions

Systemic Capability
(Public, Private, Self Governance)

Structural Shifts
(Social & Gender Norms, Equity)

Sustained Services
(Health, Livelihoods, Social Protection, Climate)

Individual & Collective Agency
(Hope, Capability)



RESILIENCE

Ability to
resist failure

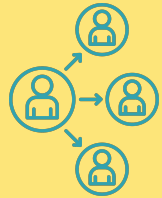
Ability to
recover

Ability to enhance
performance

Our Principles



Center Vulnerable Communities: Prioritise the needs, perspectives, and agency of vulnerable populations in all initiative



Catalyse change: Orchestrate actions at and between strong, diverse coalitions and partnerships to achieve common goals



Pursue Sustainable and Scalable Solutions: Focus on long-term, sustainable approaches that can be scaled to impact larger populations.



Empower Local Capacities: Strengthen local resources and capacities for effective, context-specific responses



Embrace Adaptability and Innovation: Encourage flexibility and innovation in addressing evolving challenges and emerging crises



Promote Inclusivity and Equity: Ensure all initiatives promote equity and inclusivity, addressing the specific needs of marginalized and vulnerable groups



We're not just solving problems;

we're **catalysing** a **movement for**

lasting impact -
powered by the people
and for the planet.



We are not just hoping for a better world;
we are building it -
together with you.

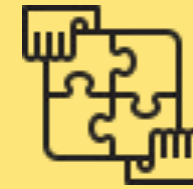
So that Manju and others like her are
able to face and overcome challenges in
their lives and emerge stronger

Here's how you can engage with us

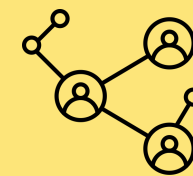


Partner with us

Become a CAC member
Engage with our coalitions/initiatives
Take up our models for implementation in your field locations
Work with us in our solution areas



Co-create innovative solutions



Connect us to sectoral players who are interested in supporting our streams of work



Invest in helping the vulnerable people we work with. in organisational resilience building or in timely and effective emergency response and recovery



By doing so you get

Partnership with a Group

with a proven track record of reaching the most vulnerable at scale

Opportunity to be a part of and contribute to an **innovative and transformative resilience model**

Access to 8+ Coalitions and 400+ member organisations, pan India; and multiple experts

Reach to 10 million vulnerable people in India